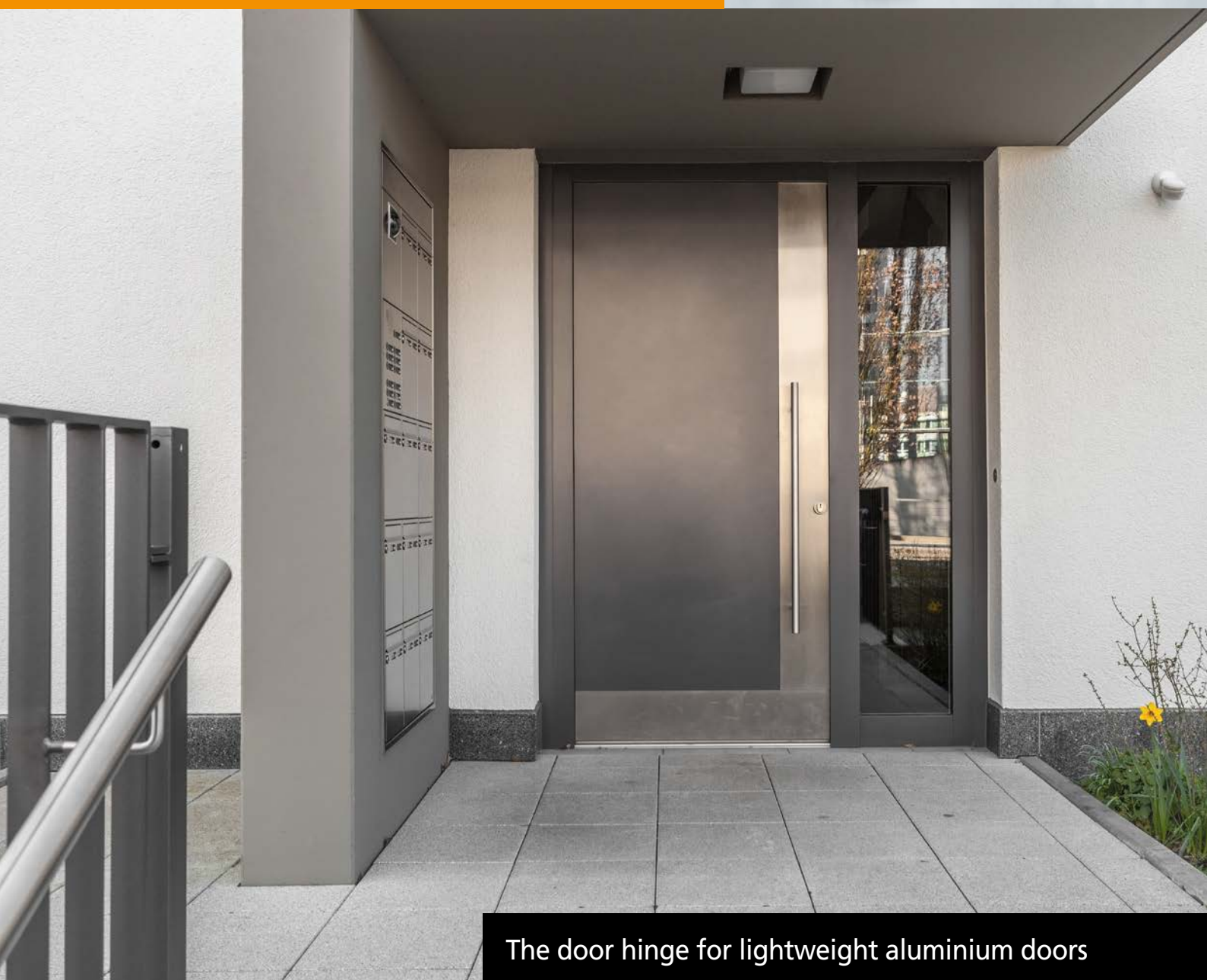




**Hahn AT-G**

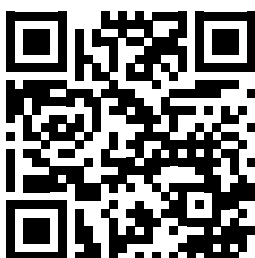


**AT-G**



The door hinge for lightweight aluminium doors

**CE**





							
Service classes	Durability	Weight of test door	Fire resistance	Security	Corrosion resistance	Intrusion protection	Hinge class
4	7	5	0	1	4 (5*)	1	12

Suited for installation on doors placed along emergency escape routes. \*Corrosion class 5 according to DIN EN 1670:2007  
 Class 4 = High corrosion resistance  
 Class 5 = Very high corrosion resistance



For explanations of the table, visit [www.dr-hahn.com](http://www.dr-hahn.com)





# Hahn AT-G

The door hinge  
for lightweight  
main entrance  
doors and side  
entrance doors

- 1 **Made from extruded aluminium**  
– for high resistance
- 2 **Slender frame hinge part** – also  
suitable for narrow frame profiles
- 3 **Horizontal adjustment**  
 $\pm 5$  mm – conveniently without  
removing sash
- 4 **Direct attachment in frame  
and sash** – for a quick installation
- 5 **Convenient, infinitely variable  
pressure adjustment  $\pm 2.5$  mm** –  
without lifting or removing the door
- 6 **Upright situations from**  
3.5 to 13 mm – and flush-mounted  
profiles
- 7 **No visible offsets** after  
adjustments
- 8 **Bushing made of high-quality  
plastic** – designed for heavy-duty  
use
- 9 **High-quality surfaces** –  
available in all RAL colours
- 10 **Height adjustment + 3 mm and  
– 2 mm** – adjustment by a single  
person without relieving the sash

## Further advantages

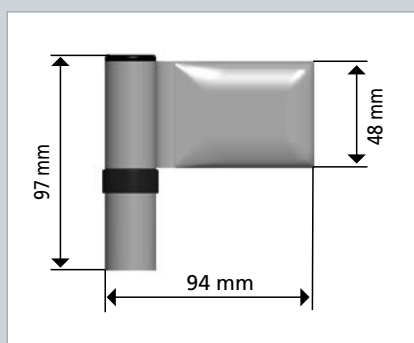
- Suited for flush-mounted  
aluminium systems and  
various upstand situations
- Adjustment in 6 directions  
without removing sash
- Optimized, quick fastening  
method: direct screw connection  
in frame and sash with self  
drilling screws
- According to profile design,  
max. 90 kg
- Can be used for DIN left/  
DIN right
- Maintenance-free bearing

- CE-certified in accordance  
with EN 1935:2002 with hinge  
class 12

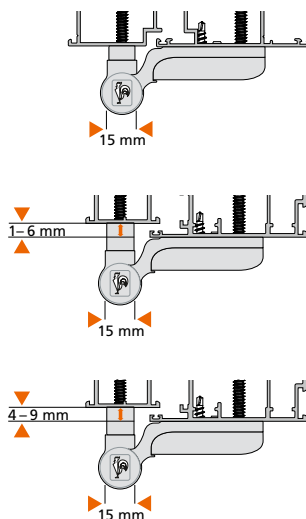
## Areas of application

Doors made of metal profiles,  
both in residential and commercial  
applications

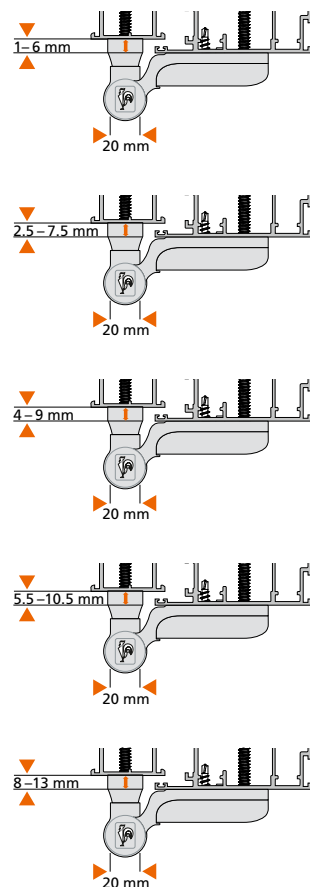
- Main entrance doors
- Side entrance doors
- Entrance doors for flats
- Interior doors
- Exterior doors



for narrow frames



for standard frames





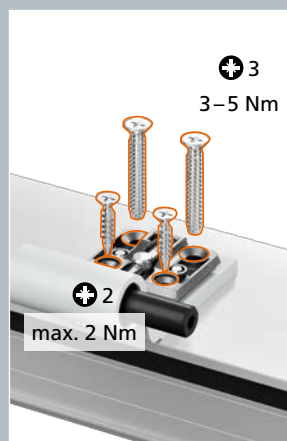
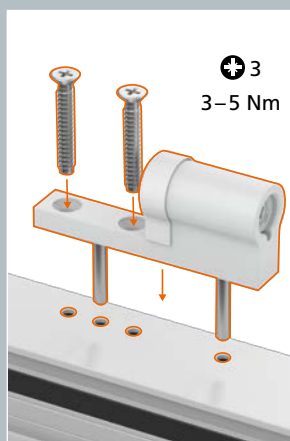
## Maximum convenience for door makers

The 2-piece door hinge supports up to 90 kg and is adjustable in 6 directions.

All adjustments are made without removing the sash. In this way, the door can be adjusted vertically from +3 mm to -2 mm. The horizontal adjustment range is  $\pm 5$  mm. All adjustments are continuous. The sealing compression can be changed to relieve the pressure by 2.5 mm or to increase it by 2.5 mm.

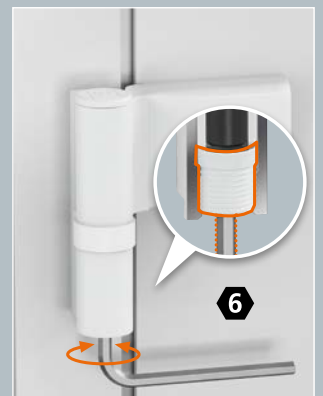
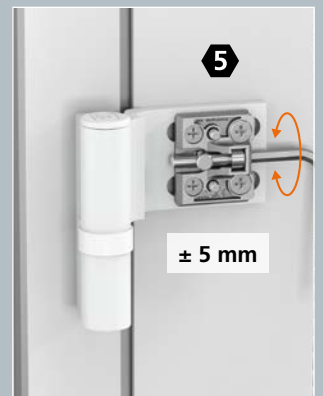
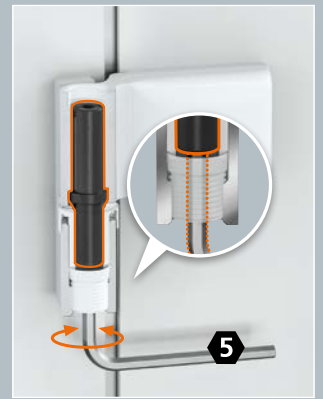
The hinge is delivered in a highly pre-assembled state, guaranteeing a quick installation process.

## Installation instructions





## Adjustment instructions



### Direct screw connection with secure hold

The hinge is mounted directly without any fastening plates in single and multiple chamber systems. To ensure a secure hold, a minimum wall thickness of 1.6 mm is required when screwed into two walls. For cold profiles, where the hinge is only attached through one wall, a minimum wall thickness of 1.8 mm is specified. A customised drilling jig helps the installer to drill the appropriate holes quickly and reliably.



## Different pivot points for different situations



### Hahn AT-G – the door hinge for light main entrance doors and side entrance doors made of aluminium profiles

For flush-mounted profile systems and upstand situations from 3.5 mm – 13 mm, the Hahn AT-G can be used on most common aluminum profile systems. Two different widths of hinge bases are available on the frame side.

A 15 mm version provides the hinge with the necessary hold on narrow frames. A 20 mm wide hinge base is used on profiles with a wide frame.



## Individual components



**AT-G**



- ① Frame hinge part
- ② Leaf hinge part
- ③ Hinge cover
- ④ Plastic cap
- ⑤ Bearing bushing with height adjustment screw
- ⑥ Bearing pin
- ⑦ Self-drilling screw 5 x 25 mm
- ⑧ Screw 6,3 x 40 mm
- ⑨ Cylinder screw with collar



## Item numbers

### AT-G for narrow frames (15 mm hinge base)

	Packing unit 1 hinge per box	Packing unit 24 hinges per box
Flush-mounted	A510 <input type="checkbox"/> 0010	A510 <input type="checkbox"/> V010
Upright range 1–6 mm	A510 <input type="checkbox"/> 0020	A510 <input type="checkbox"/> V020
Upright range 4–9 mm	A510 <input type="checkbox"/> 0040	A510 <input type="checkbox"/> V040

### AT-G for standard frame (20 mm hinge base)

Upright range 1–6 mm	A511 <input type="checkbox"/> 0020	A511 <input type="checkbox"/> V020
Upright range 2,5–7,5 mm	A511 <input type="checkbox"/> 0030	A511 <input type="checkbox"/> V030
Upright range 4–9 mm	A511 <input type="checkbox"/> 0040	A511 <input type="checkbox"/> V040
Upright range 5,5–10,5 mm	A511 <input type="checkbox"/> 0050	A511 <input type="checkbox"/> V050
Upright range 8–13 mm	A511 <input type="checkbox"/> 0060 A511 <input type="checkbox"/> 0061*	A511 <input type="checkbox"/> V060 A511 <input type="checkbox"/> V061*

\*with long countersunk-head sheet metal screw 6x60 mm

### Order key / Item number

☐ E = RAL 9010 white PVC parts

☐ G = RAL 9016 white PVC parts

☐ 5 = RAL 8077 black PVC parts

☐ 4 = RAL 9010 black PVC parts

☐ 6 = RAL 9016 black PVC parts

☐ 9 = Custom colour black PVC parts

If you select No. 9, please indicate custom colour.

Example: RAL 9005 jet black.

### Individual parts / Accessories

	Item number available on request
① Frame hinge part	
② Leaf hinge part	A500B0003
③ Hinge cover	K300B0006
④ Plastic cap	K200K0010 (black) K200K0011 (white)
⑤ Bearing bushing with height adjustment screw	K200B0150 (black) K200B0151 (white)
⑥ Bearing pin	K200E0009
⑦ Self-drilling screw 5 x 25 mm	E3300803
⑧ Screw 6.3 x 40 mm	K200E0002
⑨ Cylinder screw with collar	K200E0011
Drilling jig 	T510A0000

